

14443C-R-W64-M2

ISO14443C and ISO14443A RFID Reader module with wiegand 64 bit interface

Features

- Reading distance up to 3-5 cm
- Less than 100ms decoding time
- Low power dissipation with single power supply
- Support ISO14443C and ISO14443A
- 24 pins module Size : (24x38x8)mm
- External antenna : (65x68)mm
- Wiegand 64 bit output interface



Output Format

ISO14443C

(MSB)							(LSB)
sn7 (8 bit)	Sn6 (8 bit)	Sn5 (8 bit)	Sn4 (8 bit)	Sn3 (8 bit)	Sn2 (8 bit)	Sn1 (8 bit)	Sn0 (8 bit)

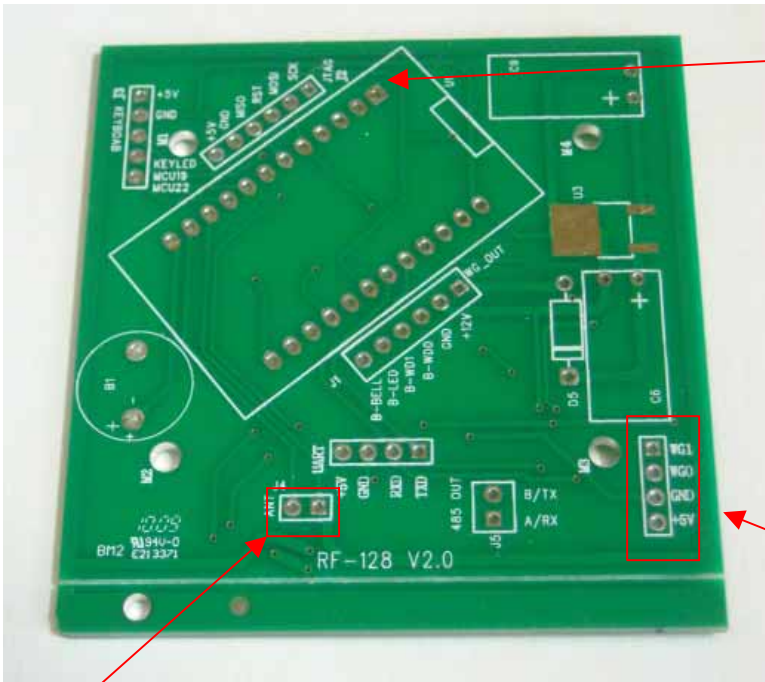
ISO14443A

32bit CSN	8 bit CRC	24 bit "0"
-----------	-----------	------------

Interface Description

Pin Out	Description	Pin Out	Description
1	Vcc +5V (+/- 5%)	24	GND
2	NC	23	NC
3	LED Output (open drain)	22	Data 1 (Wiegand)
4	Buzzer Output (open drian)	21	Data 0 (Wiegand)
5	NC	20	NC
6	NC	19	NC
7	NC	18	NC
8	NC	17	NC
9	NC	16	NC
10	ANT1	15	NC
11	ANT2	14	NC
12	Analog Power input +5V	13	Analog GND

Connection Diagram



Pin 1

WG1 (64bit output)	Pin 22
WG0 (64bit output)	Pin 21
GND	Pin 24
+5V	Pin 1

Port 1
Wiegand Output Port

External Antenna Port

ANT1	Pin 10
ANT2	Pin 11

Remarks :

[1] The antenna is embedded in the reader PCB .
It can be used as a external antenna or embedded circuit operation.

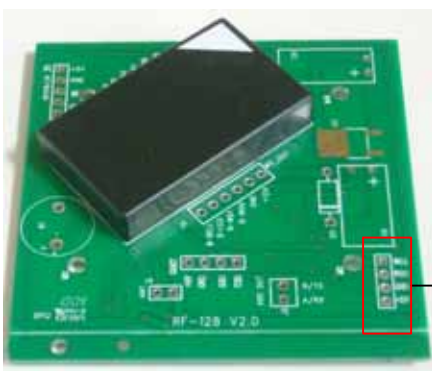
External Antenna connection

It can be used as a external antenna for operation when connect the reader with the external antenna port.

Embedded Circuit operation

The reader module can be soldered in the PCB for easy operation.

(Solder : pin 1,10,11,12,13,21,22 & 24)



Wiegand 64 bits Output