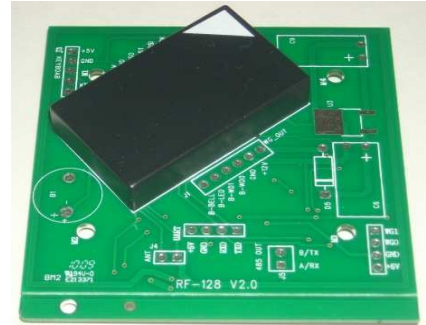


14443C-R-TTL-M1

ISO14443C and ISO14443A RFID Reader module with UART TTL output interface

Features

- Reading distance up to 3-5 cm
- Less than 100ms decoding time
- Low power dissipation with single power supply
- Support ISO14443C and ISO14443A
- 24 pins module Size : (24x38x8)mm
- External PCB antenna : (65x68)mm
- Output interface : TTL serial out



Output Format

Baud rate : 9600,N,8,1

CRC : XOR from Reader ID (1 byte) to Card data (5 Byte) → (Total 6 Byte)

STX (Start String)	Reader ID	Card data	CRC	ETX (End String)
0x7E	(1 Byte)	(5 Byte)	(1 Byte)	0x0D 0x0A

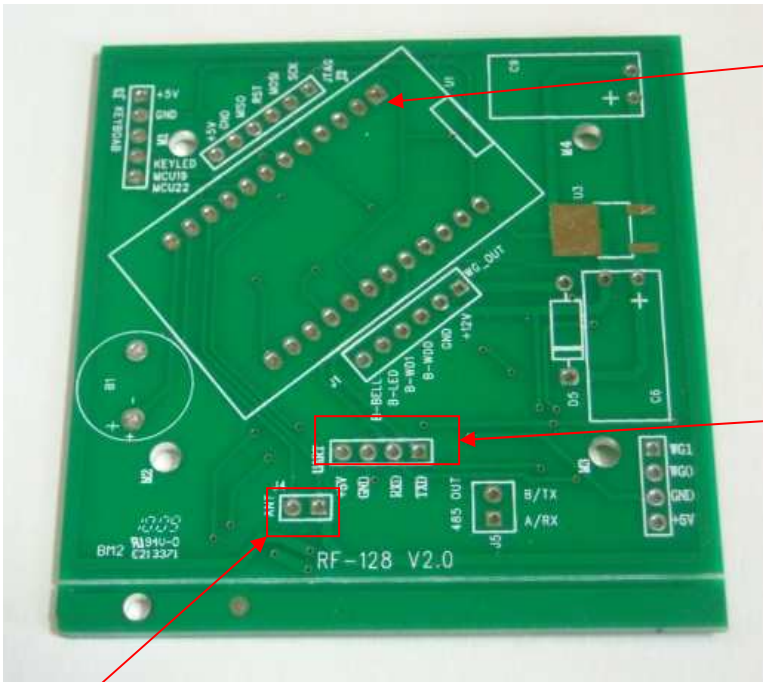
Example :

0x7E 00 00 90 06 E7 10 61 0x0D 0x0A

Pin assignment

Pin Out	Description	Pin Out	Description
1	Vcc +5V (+/- 5%)	24	GND
2	NC	23	NC
3	LED Output (open drain)	22	NC
4	Buzzer Output (open drian)	21	NC
5	NC	20	TTL (TX)
6	NC	19	NC
7	NC	18	NC
8	NC	17	NC
9	NC	16	NC
10	ANT1	15	NC
11	ANT2	14	NC
12	Analog Power input +5V	13	Analog GND

Connection Diagram



Pin 1

TTL (TX) serial out	Pin 20
GND	Pin 24
+5V	Pin 1

TTL serial output

External Antenna Port (option)

ANT1	Pin 10
ANT2	Pin 11

Remarks :

[1] The antenna is embedded in the reader PCB .
It can be used as a external antenna or embedded circuit operation.

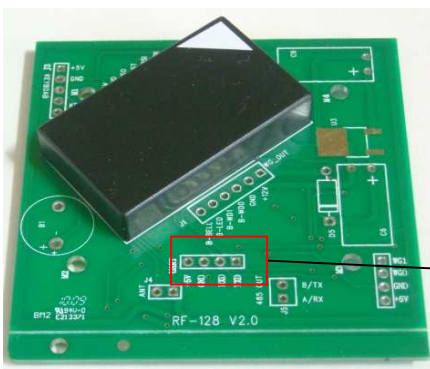
External Antenna connection

It can be used as a external antenna for operation when connect the reader with the external antenna port.

Embedded Circuit operation

The reader module can be soldered in the PCB for easy operation.

(Solder : pin 1,10,11,12,13,20 & 24)



TTL serial out